
TR-3

Remote Control



User Manual

Teatro Version 4.7.5
12/2016



SOFTWARE LIMITED WARRANTY

To the original customer purchasing this product in the first instance only, R.O.S. provides the following warranties:

30 Day Satisfaction Guarantee. If you are dissatisfied with the Software for any reason we will refund your money for a period of 30 days from the date of original purchase.

R.O.S. warrants that the Software will perform in substantial compliance with the documentation supplied with the Software. If a material defect in the Software is found, you may return the Software to us for a refund. In no event will such a refund exceed the purchase price of the Software. This is your sole and exclusive remedy for any breach of warranty during this 30 day period.

R.O.S. does not warrant that the Software will meet your requirements, that operation of the Software will be uninterrupted or error-free, or that all Software errors will be corrected. R.O.S. is not responsible for problems caused by changes in the operating characteristics of computer hardware or computer operating systems which are made after the release of the Software nor for problems in the interaction of the Software with other software. R.O.S. will have no responsibility to replace or refund the license fee of media damaged by accident, abuse or misapplication.

Programming & Distribution:

R.O.S. Software

www.ros-software.de

email: info@ros-software.de

Windows XP/7/8/10 are Trademarks of Microsoft Corporation

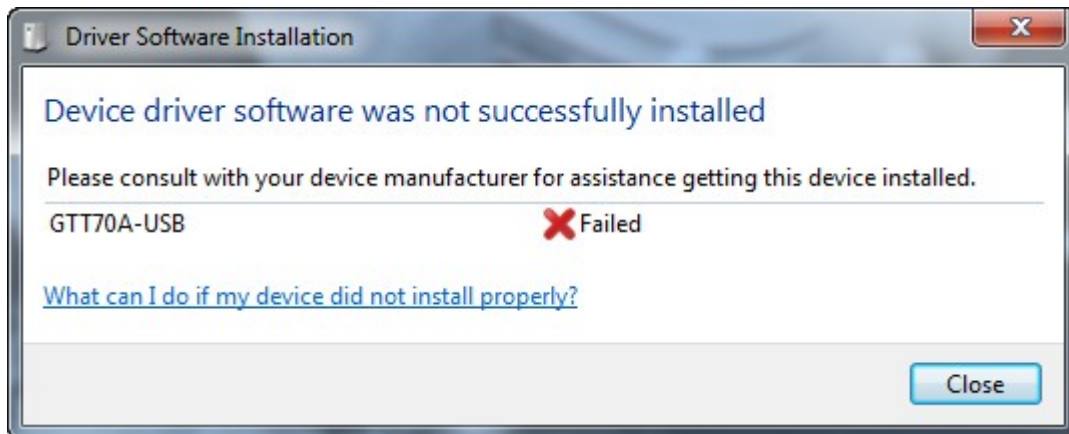
Contents

Driver Installation TR-3 USB/COM Interface.....	4
Changing the pre-assigned COM Port.....	11
Settings for the TR-3 Remote in Teatro.....	13
TFT Calibration.....	15
Firmware Update.....	15
32 Channel Display.....	16
8 Channel Display.....	17
Preset display and selection.....	18
Channel Mode - Playback functions.....	19
Channel Mode - Preview function.....	21
Channel Mode - displaying and changing parameters.....	22
Technical Notes.....	24

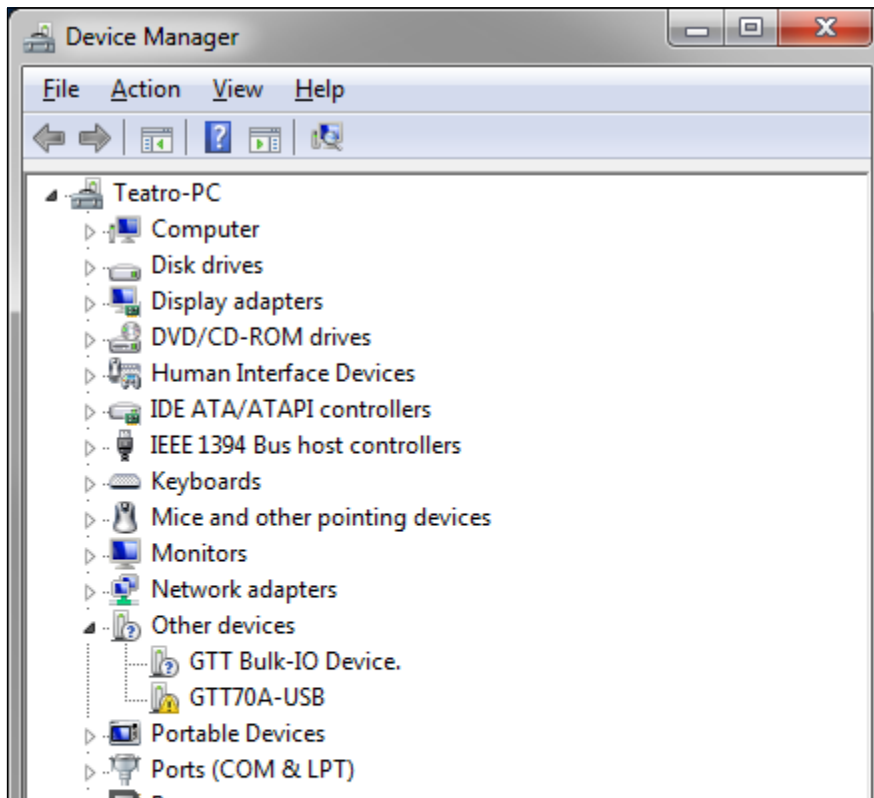
Driver Installation TR-3 USB/COM Interface

The TR-3 Remote Controller contains two USB devices. A USB keyboard controller and a USB TFT Touchscreen Display. The drivers for the keyboard device are already contained in Windows (HID device) and they will be installed automatically the first time you connect the TR-3 to your PC. The TFT Display will be controlled through a USB/COM Interface and its drivers will be installed as follows.

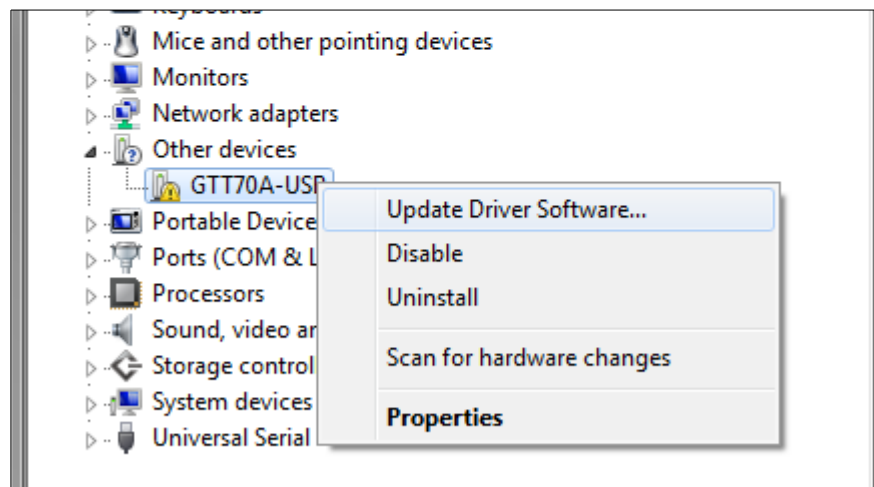
- Connect the TR-3 to your PC using the enclosed USB cable. You can use the USB-2 or USB-3 ports of your PC for this.
- A few seconds later you will see the following message:



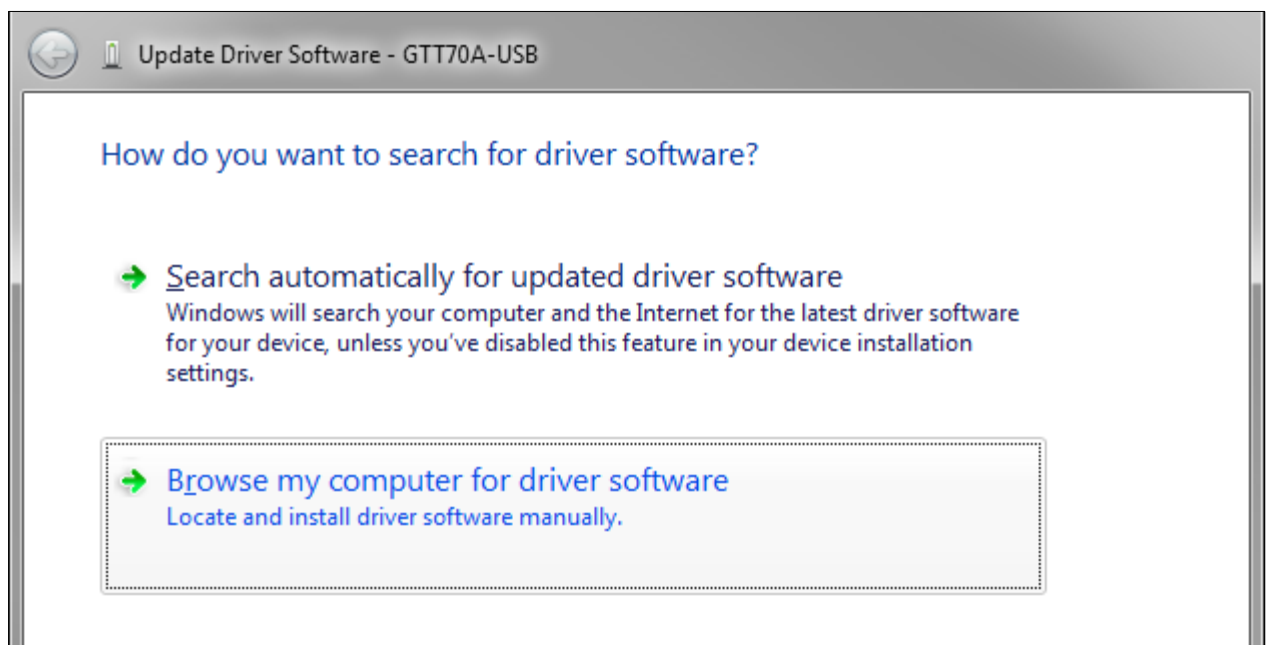
- Open the Windows **System Control** and launch the **Device Manager**:



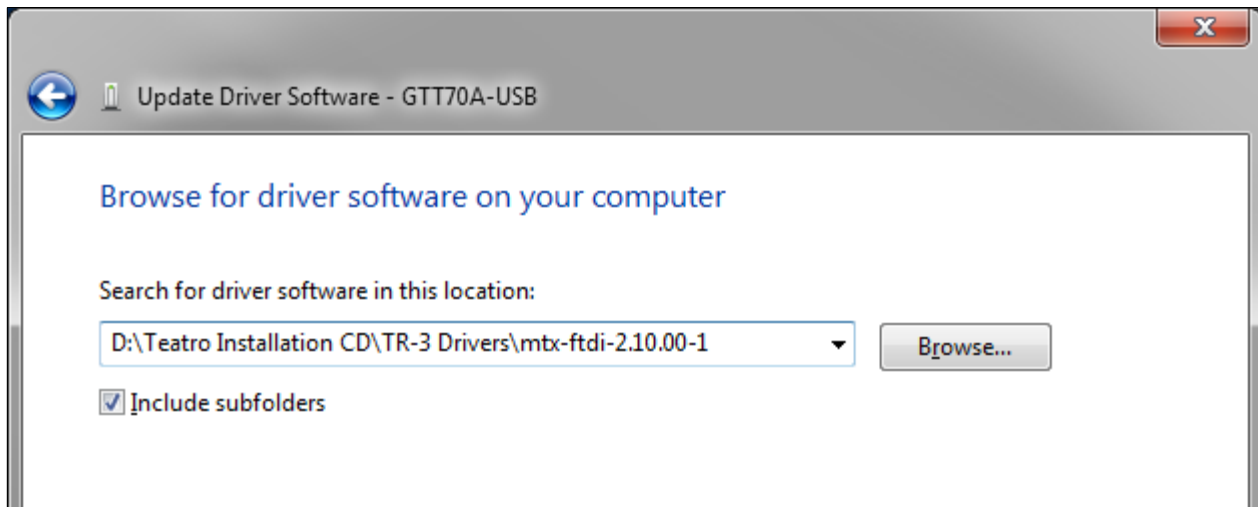
- The TFT Display of the TR-3 will be displayed in the Device Manager as GTT70A-USB. The exclamation mark means that the driver for this device is currently not installed.
- If you have already attached the Power Supply and the TR-3 is powered on, a second device with the name **GTT Bulk-IO Device** will also be displayed in the Device Manager. This is the internal SD-Card of the TFT Display and a driver for this device will be installed automatically if new firmware must be transferred to the Display device of the TR-3 (see explanation further below in this manual). For the normal usage of the TR-3 a driver for this device is not necessary.
- Select the **GTT70A-USB** entry, click the right mouse button and select **Update Driver Software...**:



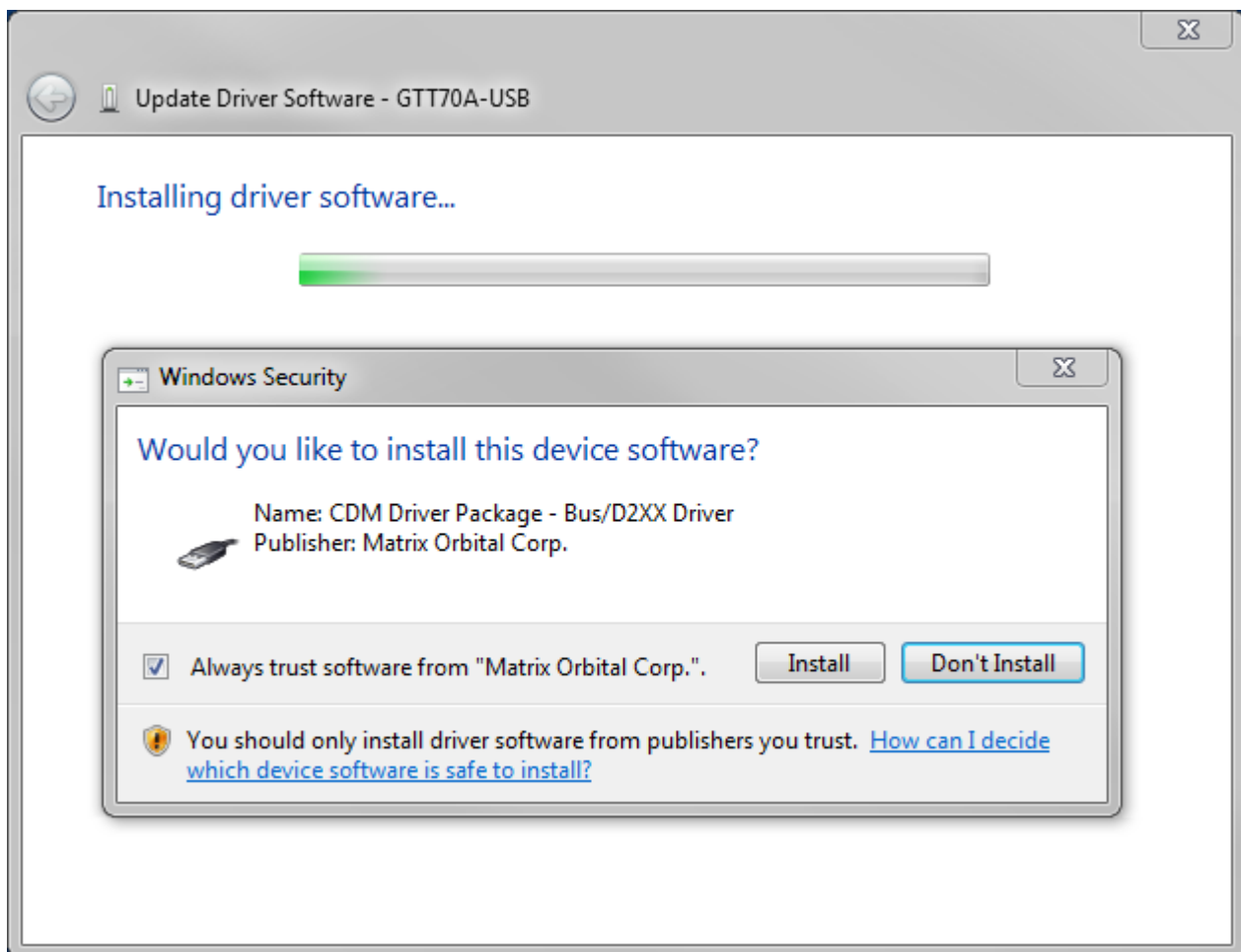
- Select **Browse my computer for driver software**



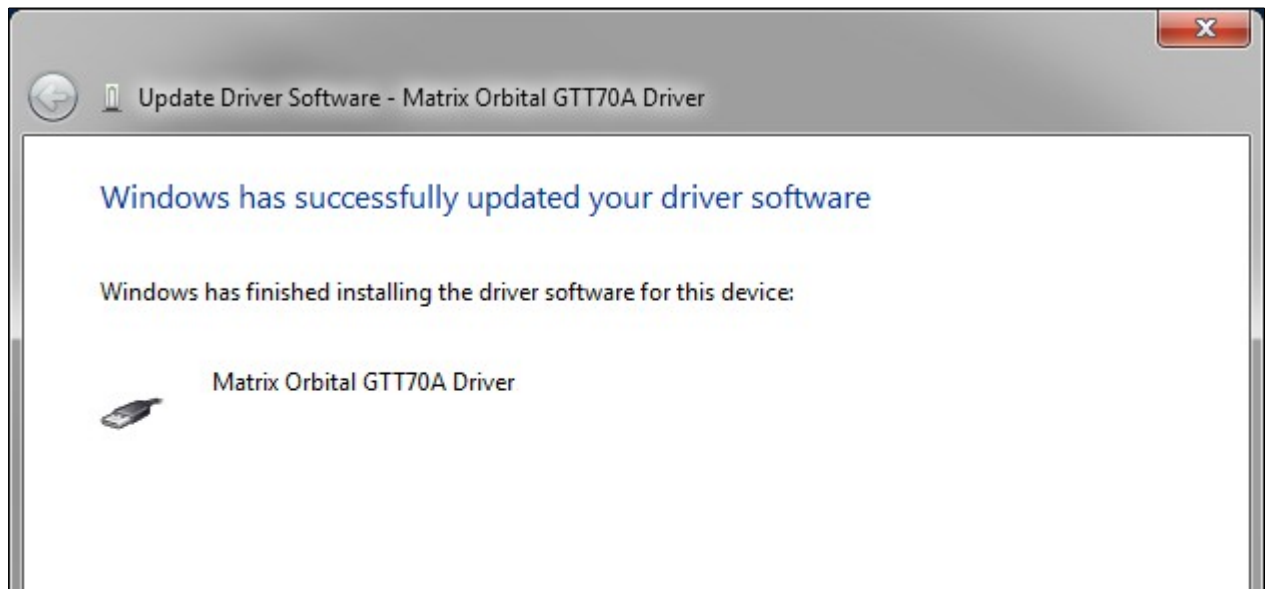
- Navigate to the folder containing the drivers for the TR-3. The drivers can be found on the Teatro Installation CD in the folder **TR-3 Drivers** or in the folder **C:\Program Files (x86)\Teatro 4\TR-3 Drivers**



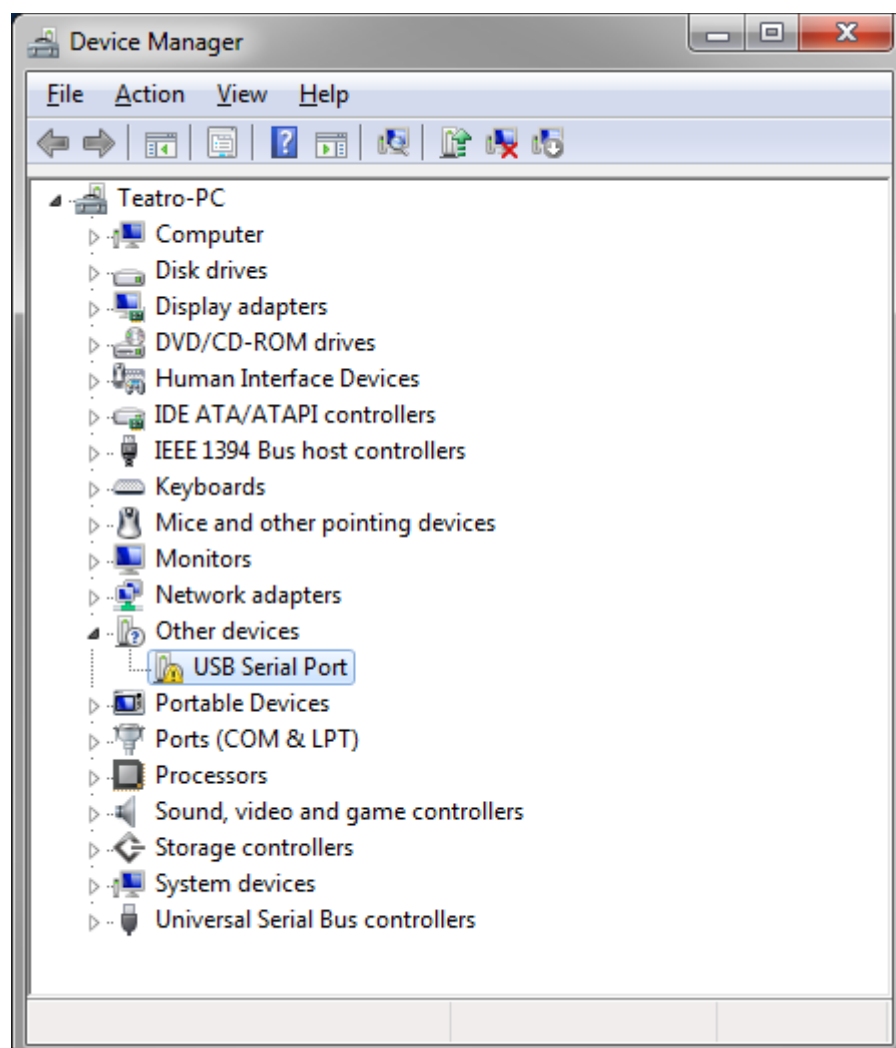
- Click **Next** to start the driver search.
- If the driver was found click the **Install** button to start the installation.



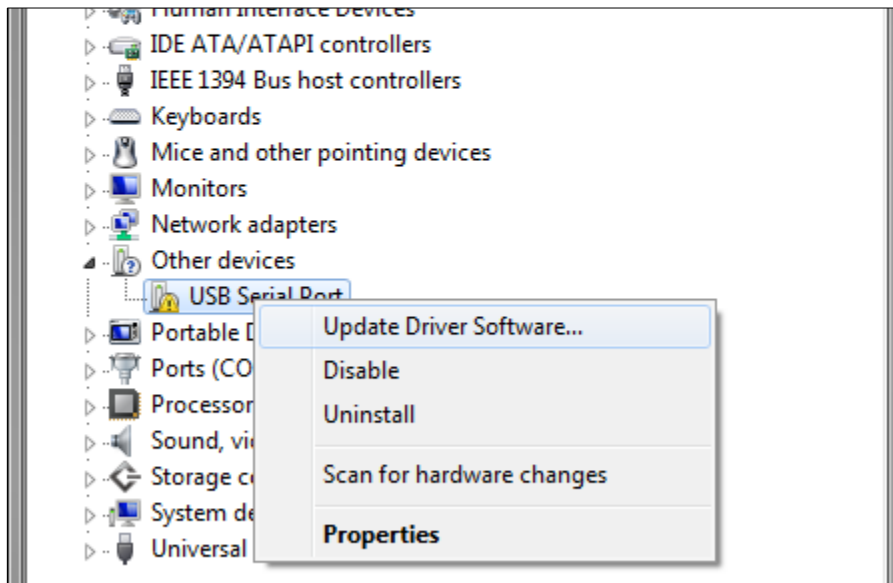
- If the installation was successful the following message will be displayed:



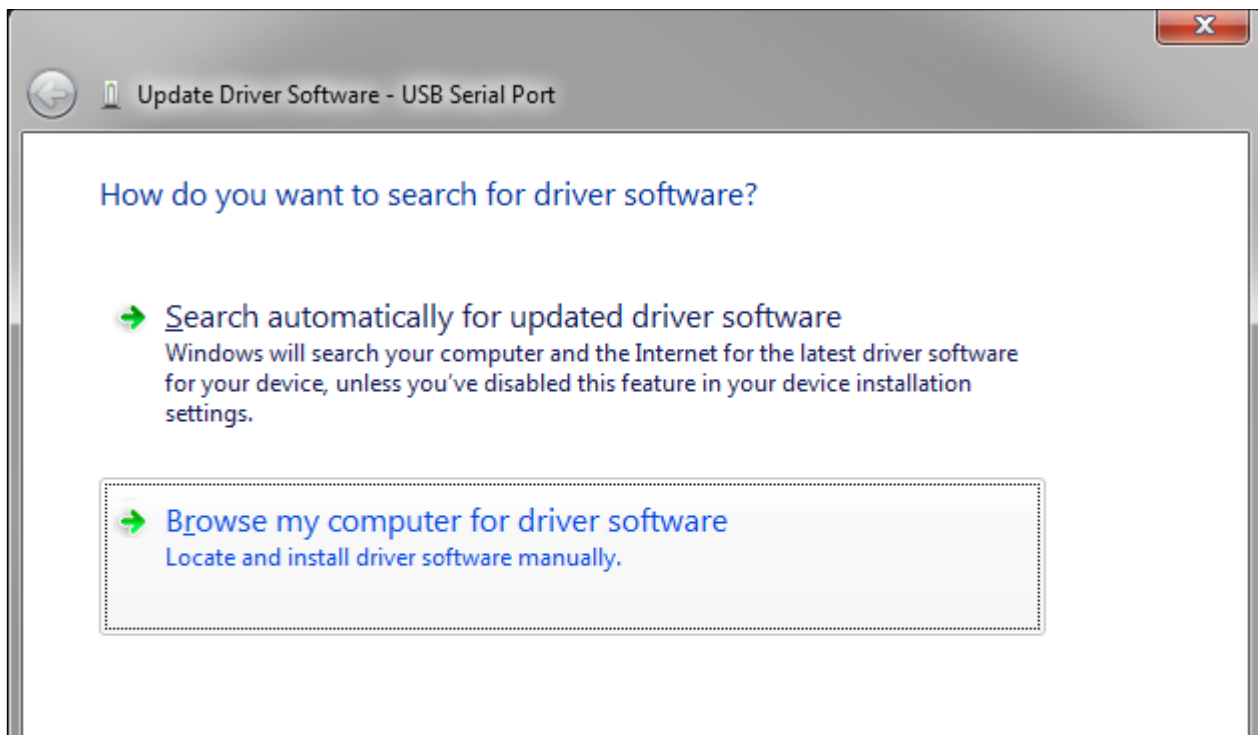
- In the next step the serial USB/COM interface must be installed.



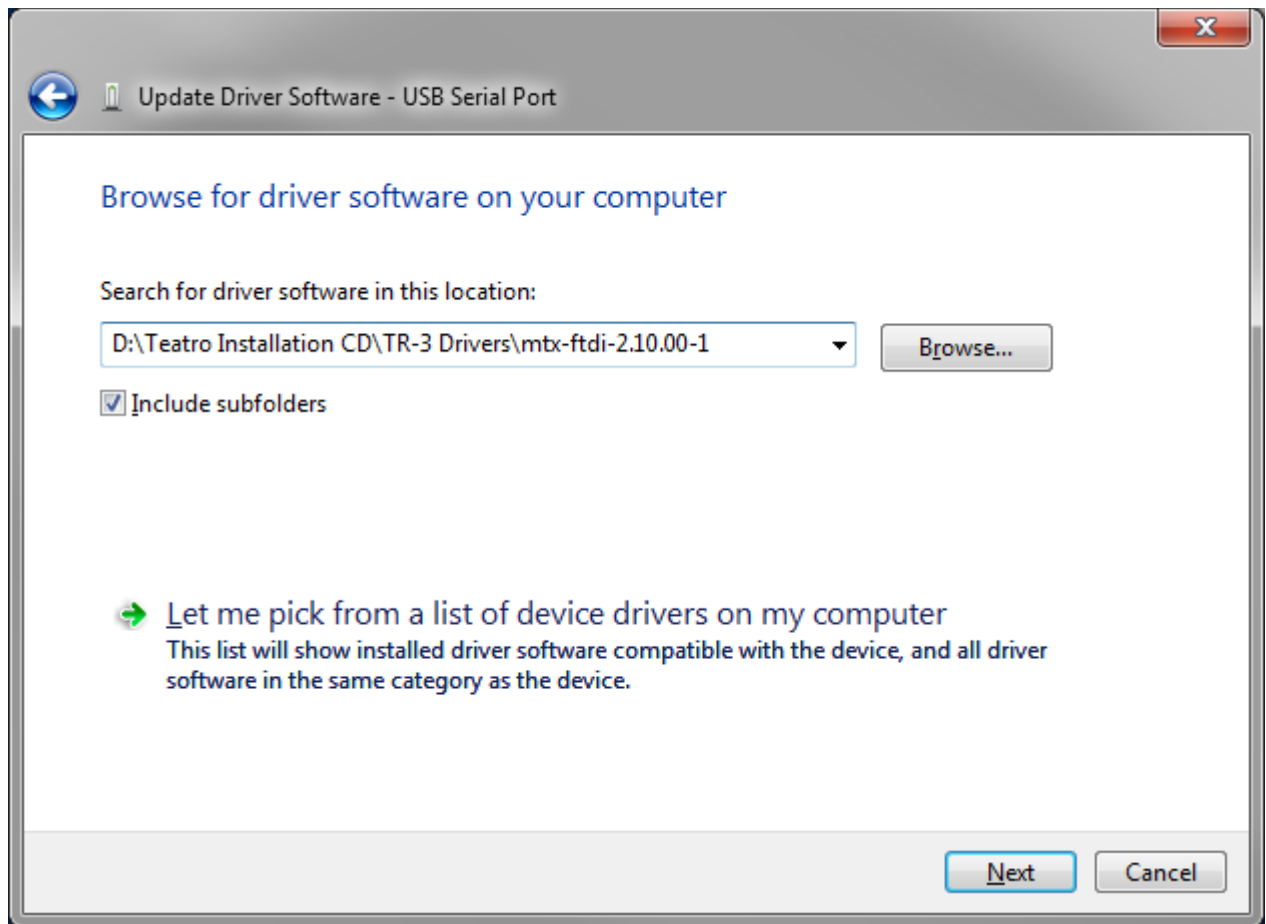
- Select the **USB Serial Port** entry, click the right mouse button and select **Update Driver Software...**:



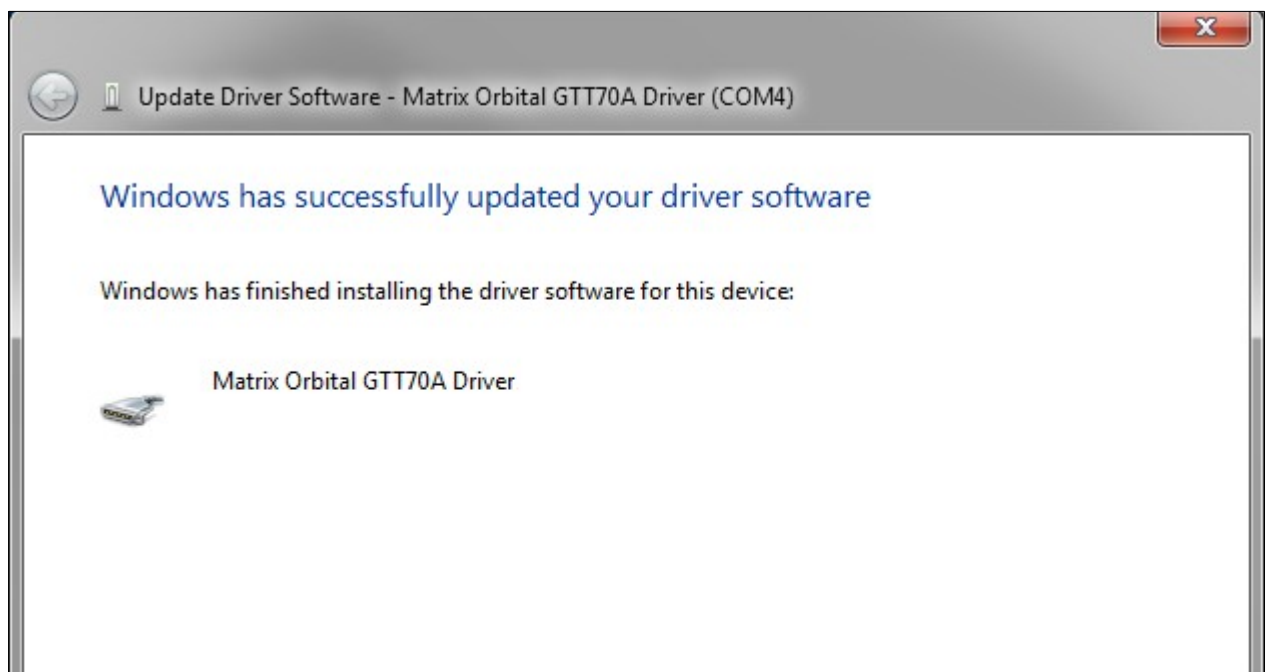
- Select **Browse my computer for driver software**



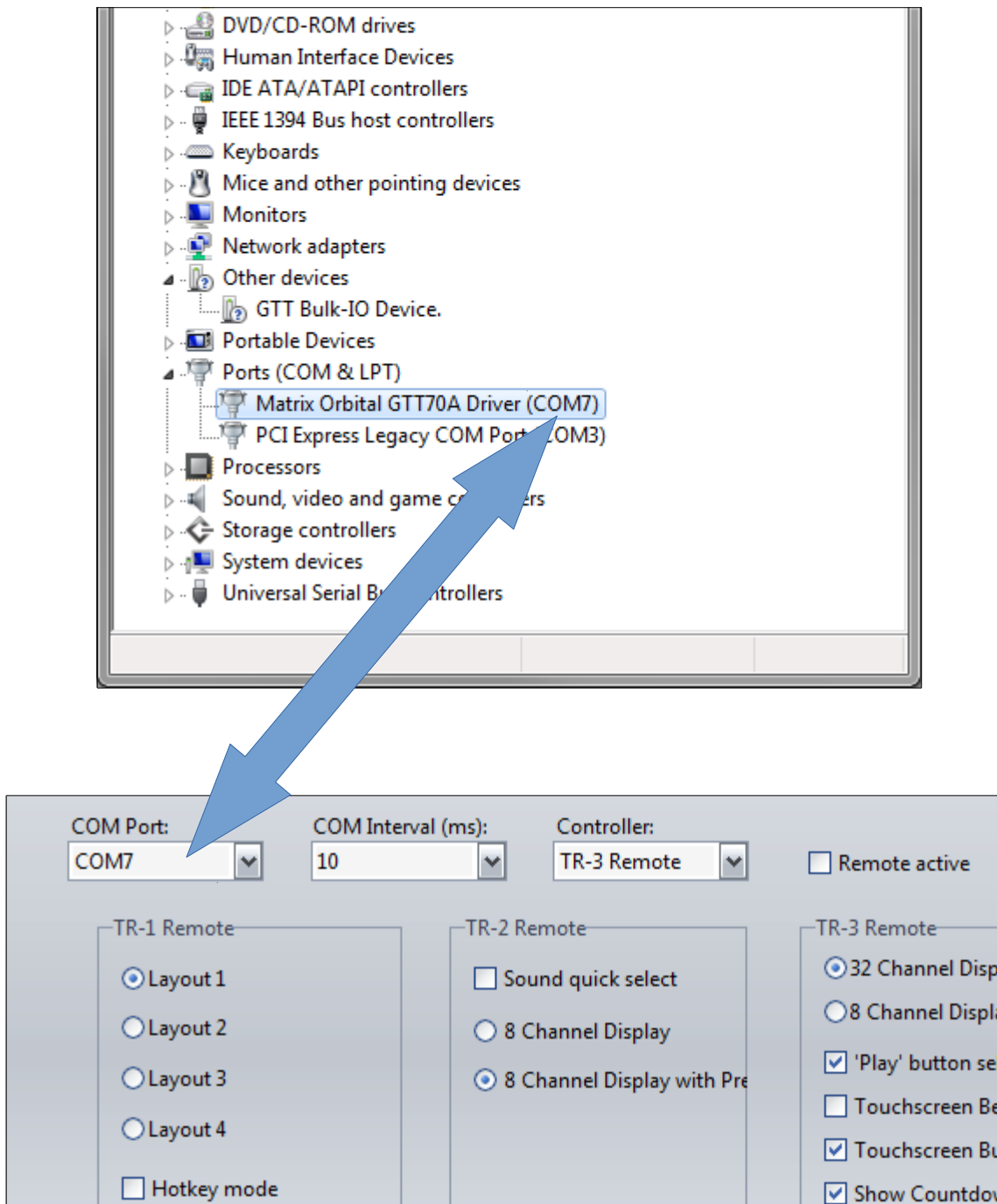
- Navigate to the folder containing the drivers for the TR-3. The drivers can be found on the Teatro Installation CD in the folder **TR-3 Drivers** or in the folder **C:\Program Files (x86)\Teatro 4\TR-3 Drivers**



- Click **Next** to start the driver search.
- Click the **Install** button to start the installation.
- If the installation was successful the following message will be displayed:



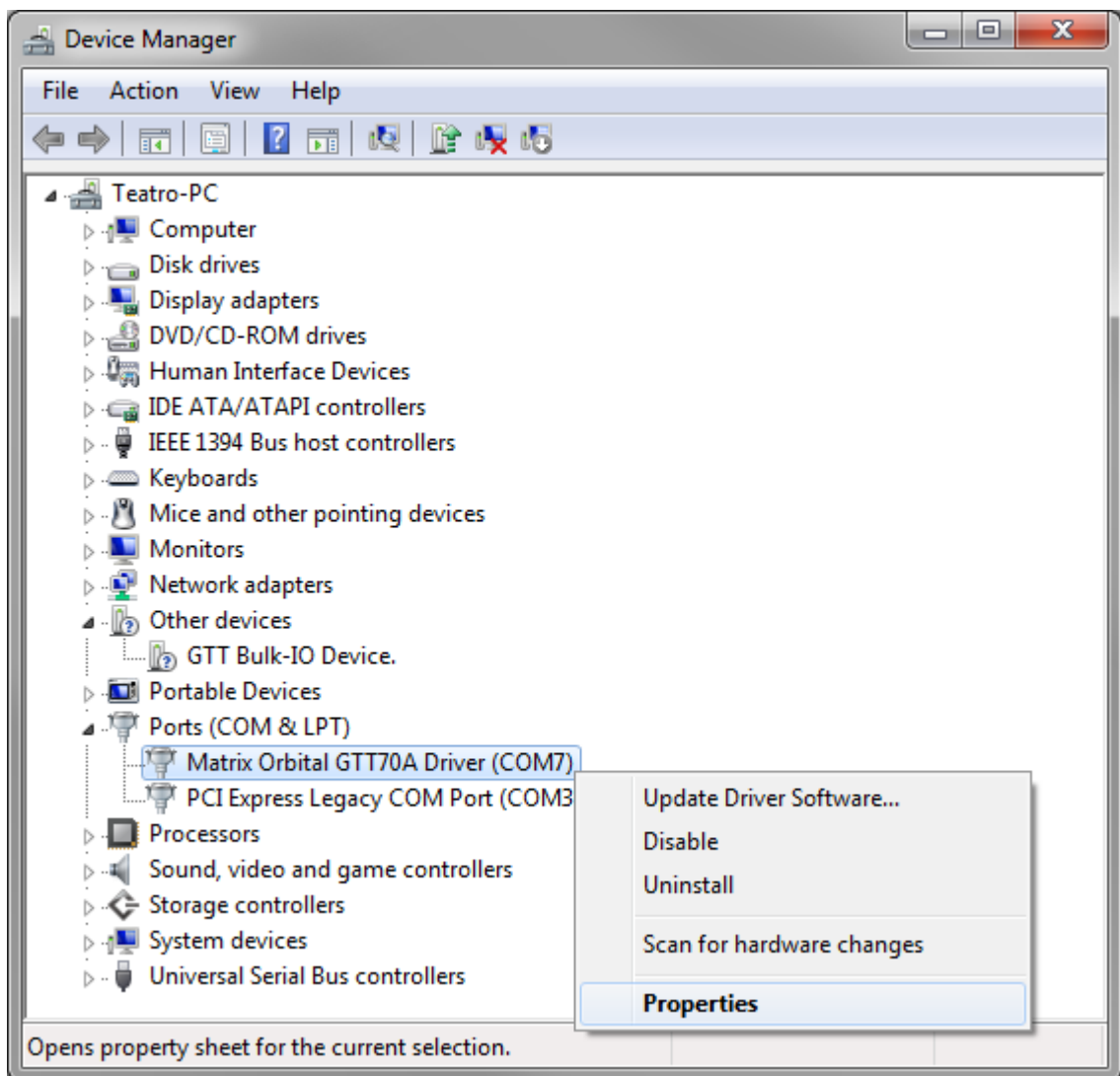
- The COM-Port listed under Ports (COM & LPT) must also be set in the Settings dialog for the TR-3 Remote in the Teatro software.



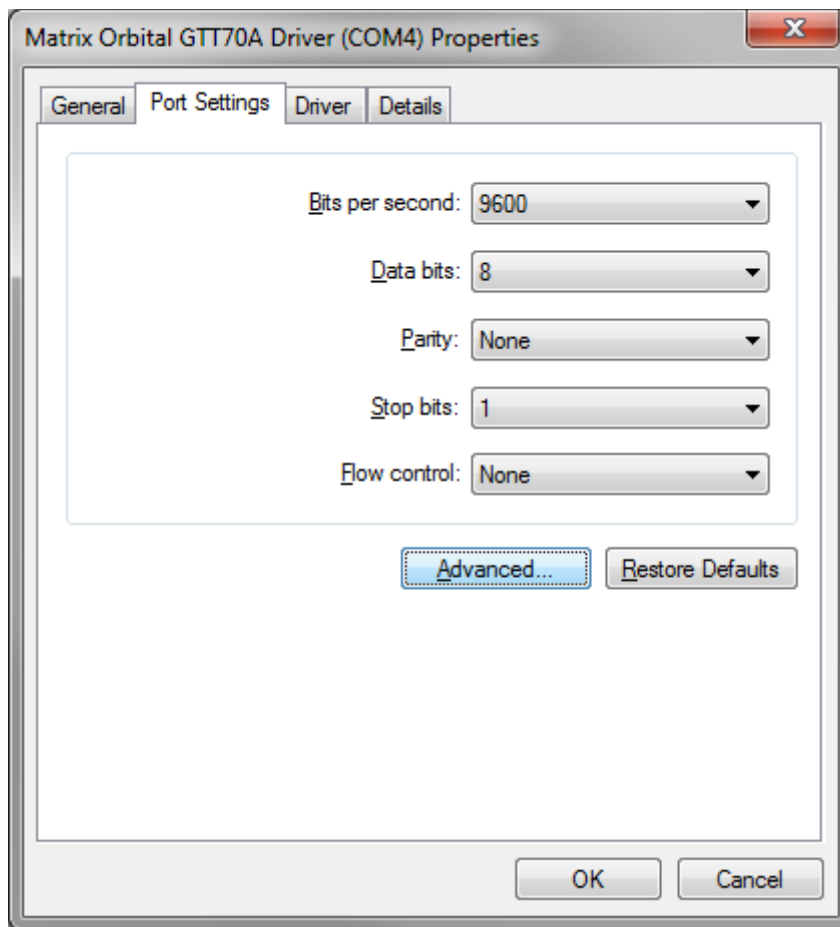
Settings dialog for the TR-3 Remote in the Teatro software

Changing the pre-assigned COM Port

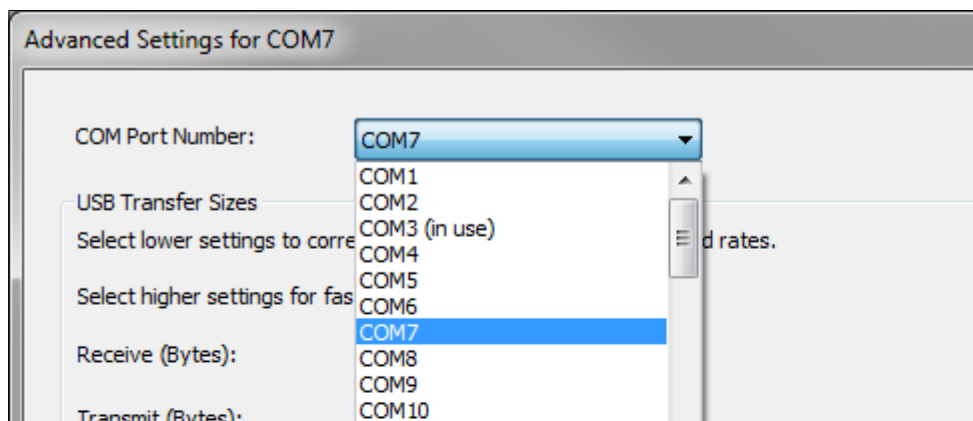
- In the Device Manager the driver of the TR-3 will now be displayed as **COM Port**.
- Although the TR-3 is connected via USB, a serial COM protocol is used between Teatro and the USB Interface. The pre-assigned Com-Port (in this example COM7), can always be used without problems, but if you need to change the Port number it can simply be changed.
- In the **Device Manager** select the **Matrix Orbital GTT70A Driver (COMx)** entry, click the right mouse button and select **Properties**



- Select the submenu **Port Settings** and **Advanced...**



- In the **Advanced Settings for COMx** dialog you can now select the new **COM Port Number**.



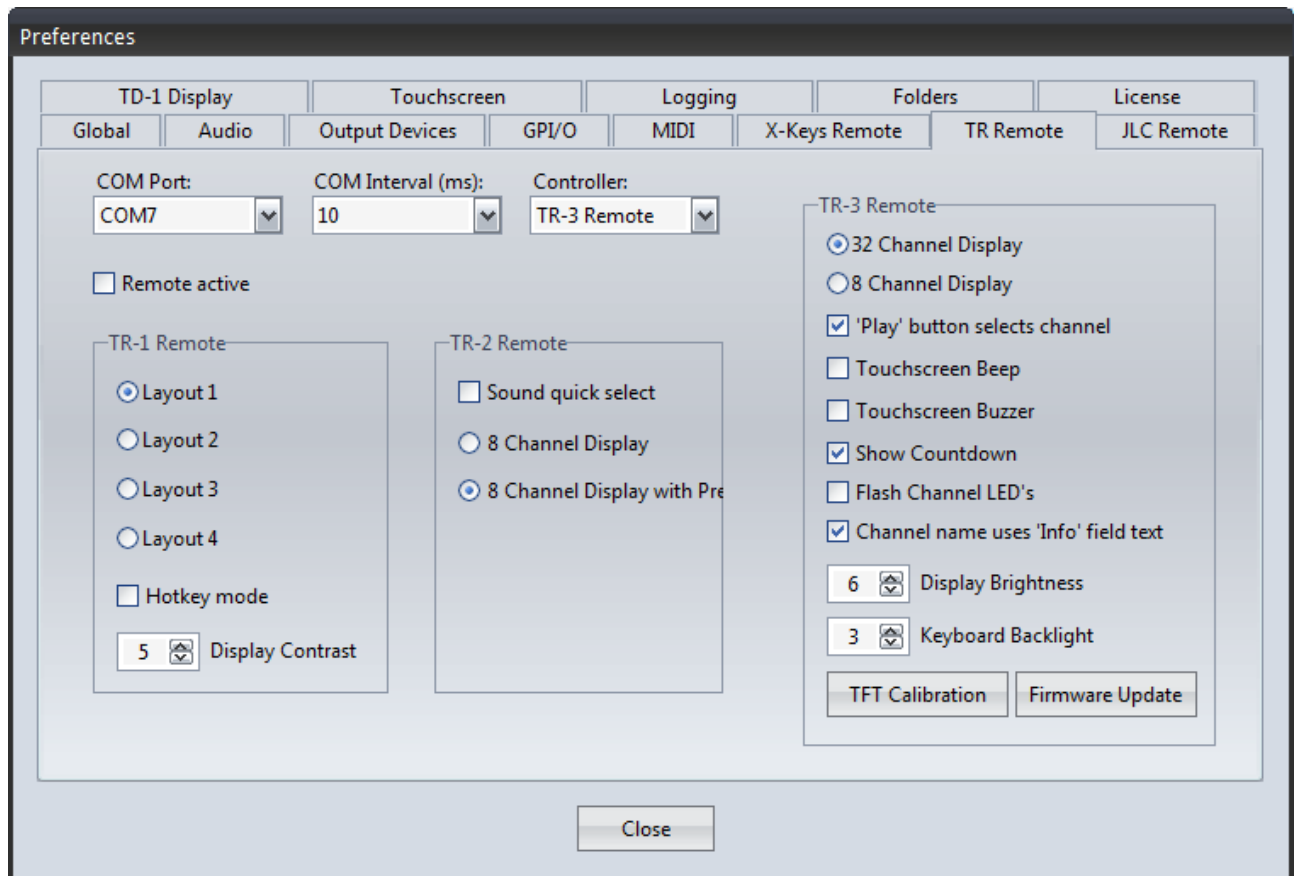
Finally the newly selected COM Port Number must also be set in the Settings dialog for the TR-3 Remote in the Teatro software.

Note:

It is also possible to use the entries which are labeled „COMx (in use)“. A Windows error message may be displayed but can be ignored. These „in use“ ports were created previously when the TR-3 Remote was connected to other USB ports of your PC.

Settings for the TR-3 Remote in Teatro

In the Teatro software you can change the settings for the TR-3 Remote under Preferences/TR Remote:



COM Port

Here you need to select the COM Port which was assigned or changed during the installation of the TR-3 driver.

COM Interval (ms)

On slower PC's it may be necessary to slow down the polling frequency of the COM interface. Normally the default value of 10ms should be okay and must not be changed.

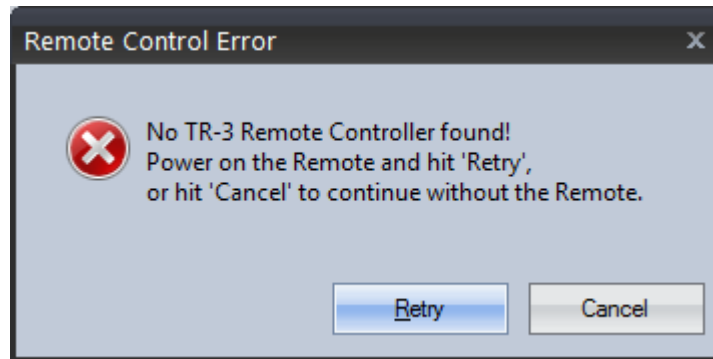
Controller

Selection of the connected TR-3 Remote Controller.

Remote active

This initiates the connection between Teatro and the TR-3 Remote. If the Remote was activated here, it will also be activated automatically when you launch Teatro the next time.

If the TR-3 Remote is not connected or not powered on when you run Teatro, the following message will be displayed:



In this case you can still connect or power on the Remote and hit the **Retry** button. Teatro will then try to initiate the connection to the TR-3 again.

32 Channel Display

Using this option you can select how many channels will initially be displayed on the main screen of the TR-3, when you launch Teatro. In the **32 Channel Display** mode 32 channels will be displayed.

8 Kanal Anzeige

Using this option you can select how many channels will initially be displayed on the main screen of the TR-3, when you launch Teatro. In the **8 Channel Display** mode 8 channels will be displayed.

Play button selects channel

Everytime you press one of the 'PLAY' buttons on the TR-3 controller, the corresponding channel in Teatro will be selected automatically. In some situations this behaviour may not be useful and can be switched off here.

Touchscreen Beep

If this option is enabled you will hear an acoustic beep sound whenever you touch the touchscreen of the TR-3.

Touchscreen Buzzer

If this option is enabled the TR-3 will generate a haptic feedback whenever you touch the touchscreen of the TR-3.

Show Countdown

Shows the actual playback position of a sound as a countdown.

Flash Channel LED's

This option will make the two Channel LED's 1/32 and 33/64 to the left of the keyboard flash or permanently lit up.

Channelname uses 'Info' field text

The displayed channel name can be switched to display the text of the 'Info' field or the filename of the loaded file. If the 'Info' field does not contain anything, the filename will be displayed instead.

Display Brightness

This changes the brightness of the TR-3 display.

Keyboard Backlight

This changes the brightness of the blue keyboard backlight.

TFT Calibration

If one or more of the touchscreen functions will not trigger properly it could be necessary to calibrate the TR-3 touchscreen.

In this case click the button **TFT Calibration** and follow the instructions on the TFT display. The calibration process was successful if a message on the display says „Calibrated!“.

If the message says „Calibration Error“ you must repeat the process.

It is recommended to carry out the calibration process using a dedicated TFT-Stylus pen, because it will make it possible to select the calibration marks on the TFT screen much more precisely. Do not use any sharp or spiky objects for the calibration as these can damage the TFT screen permanently.

Firmware Update

This function will update the internal operating software of the TFT display to a newer version. If future versions of the Teatro software will offer new features which may need additional TFT display software, you will be notified after installing and running a new Teatro version, because Teatro checks the TR-3 firmware revision everytime you launch Teatro. If a firmware update of the TR-3 is necessary, click the button **Firmware Update** and follow the on-screen instructions of the Teatro software.

32 Channel Display

The TFT Display of the TR-3 has two different track display layouts. The 32 channel display will display 32 channels of Teatro's 64 channels on one page. 16 channels on the left and 16 channels on the right side of the TFT display. Using the **Page -** and **Page +** buttons you can switch between channels 1 to 32 or 33 to 64. The Play buttons below the TFT display will correspond to the currently selected channel group. If channels 1 to 32 are displayed on the TFT display, the 32 Play buttons will control channels 1 to 32. If channels 33 to 64 are displayed on the TFT display, the 32 Play buttons will control channels 33 to 64.



Touchscreen functions on the 32 Channel Display

In both display modes (32 or 8 channel layout) the following touchscreen controls will be displayed.

Stop All

All currently playing channels can be stopped immediately using this button.

Channel

This button branches into the Channel mode, where many parameters of the currently selected channel can be changed (see description on the next pages).

View

Switches between 32-Channel and 8-Channel display mode.

Options

This button has no function in Teatro version 4.7.0 and is reserved for future enhancements and functions (e.g. loading of sounds and playlists).

Progressbar

The current playback position of a channel will be displayed as a red line above the soundname of each channel.

Play Group and Stop Group labeling

Channels which are members of a Stop Group and/or a Play Group will have an addition to their original soundname. Play Group members will have a leading P<number of the Play Group>, Stop Group members will have a leading S<number of the Stop Group>, followed by the soundname.

8 Channel Display

The TFT Display of the TR-3 has two different track display layouts. The 8 channel display will display 8 channels of Teatro's 64 channels on one page. Using the **Page -** and **Page +** buttons you can switch between channels in groups of 8. Page 1 will show channels 1 to 8, page 2 will display channels 9 to 16 and so on. There are 8 pages with 8 channels each.



Touchscreen functions on the 8 Channel Display

In both display modes (32 or 8 channel layout) the following touchscreen controls will be displayed.

Stop All

All currently playing channels can be stopped immediately using this button.

Channel

This button branches into the Channel mode, where many parameters of the currently selected channel can be changed (see description on the next pages).

View

Switches between 32-Channel and 8-Channel display mode.

Options

This button has no function in Teatro version 4.7.0 and is reserved for future enhancements and functions (e.g. loading of sounds and playlists).

Progressbar

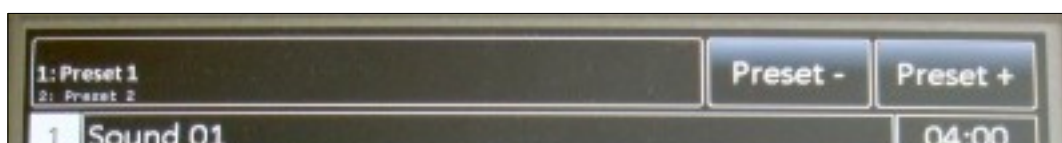
The current playback position of a channel will be displayed as a red line above the soundname of each channel.

Play Group and Stop Group labeling

Channels which are members of a Stop Group and/or a Play Group will have an addition to their original soundname. Play Group members will have a leading P<number of the Play Group>, Stop Group members will have a leading S<number of the Stop Group>, followed by the soundname.

Preset display and selection

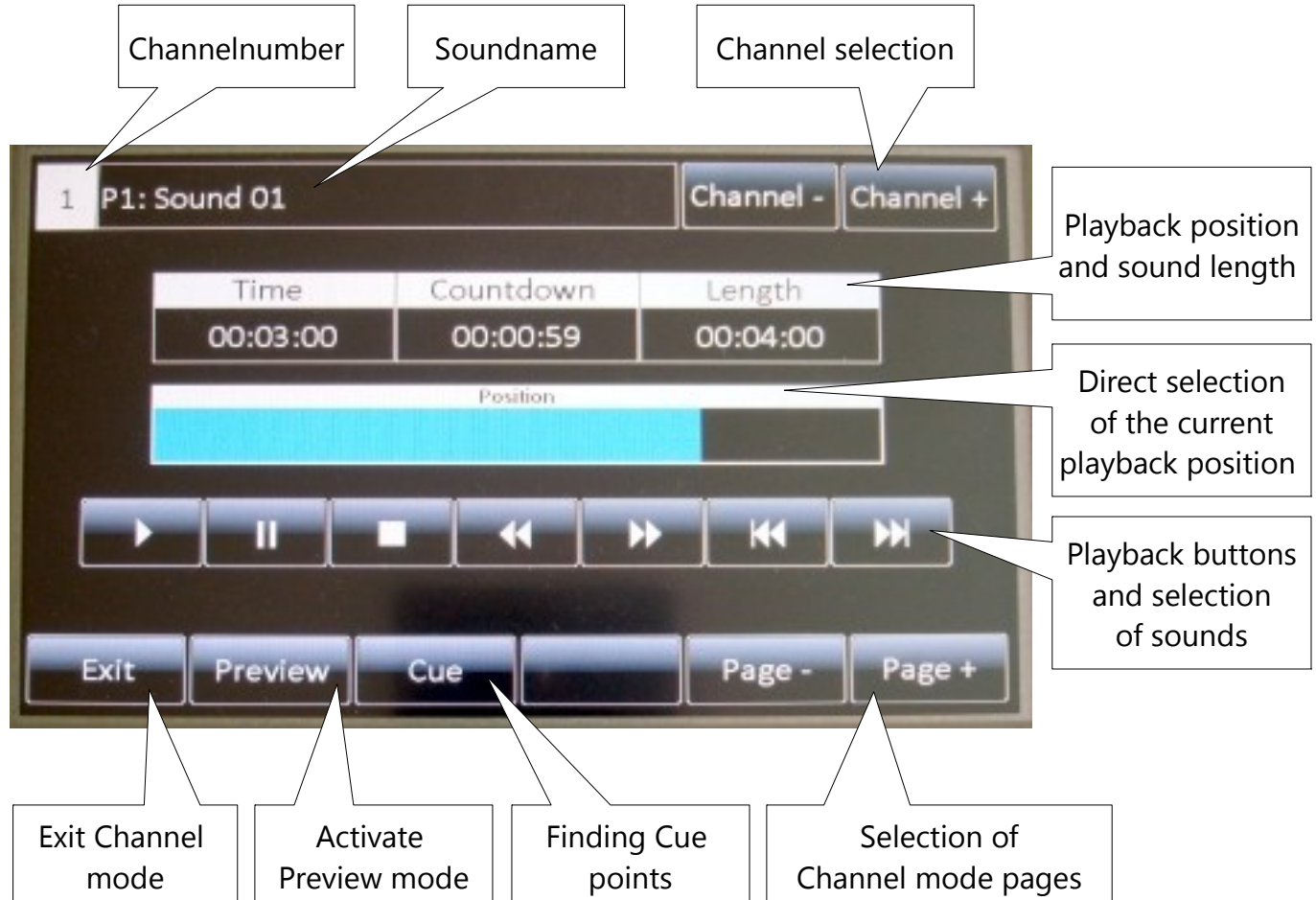
In both display layout modes (32 or 8 channel mode) the buttons **Preset -** and **Preset +**, which are located in the upper area of the TFT display, can be used to select the Presets of a loaded Playlist. The name of the currently selected Preset is displayed in bold letters to the left of the **Preset +/-** buttons. Following or preceding Presets in the Playlist are displayed in a smaller font above and below the loaded Preset name.



Display of Preset name and selection of Presets

Channel Mode - Playback functions

The Channel mode can be used to change a number of playback parameters of the currently selected channel.



Channelnumber, Soundname and Channel Selection

Display of channelnumber and soundname of the currently selected channel.

The **Channel -** and **Channel +** buttons can be used to select the next or previous channel.

Playback Position and Sound Length

Time shows the current playback position. **Countdown** shows the remaining time of a playing sound. **Length** shows the overall soundlength of the loaded sound.

Position

This field shows the current playback position of the sound as a progress bar. The position can be directly changed by touching the TFT screen in this area.

Playback Functions

The buttons Play, Pause, Stop, Forward and Rewind are controlling the playback of the sound. The two buttons Previous and Next to the right can be used to select the previous or the next sound of a channels soundlist.

Preview

Switches to the Preview mode of the channel (see description below).

Cue

This button controls the Cue function of each channel (see full explanation in the Teatro manual).

Page Selection

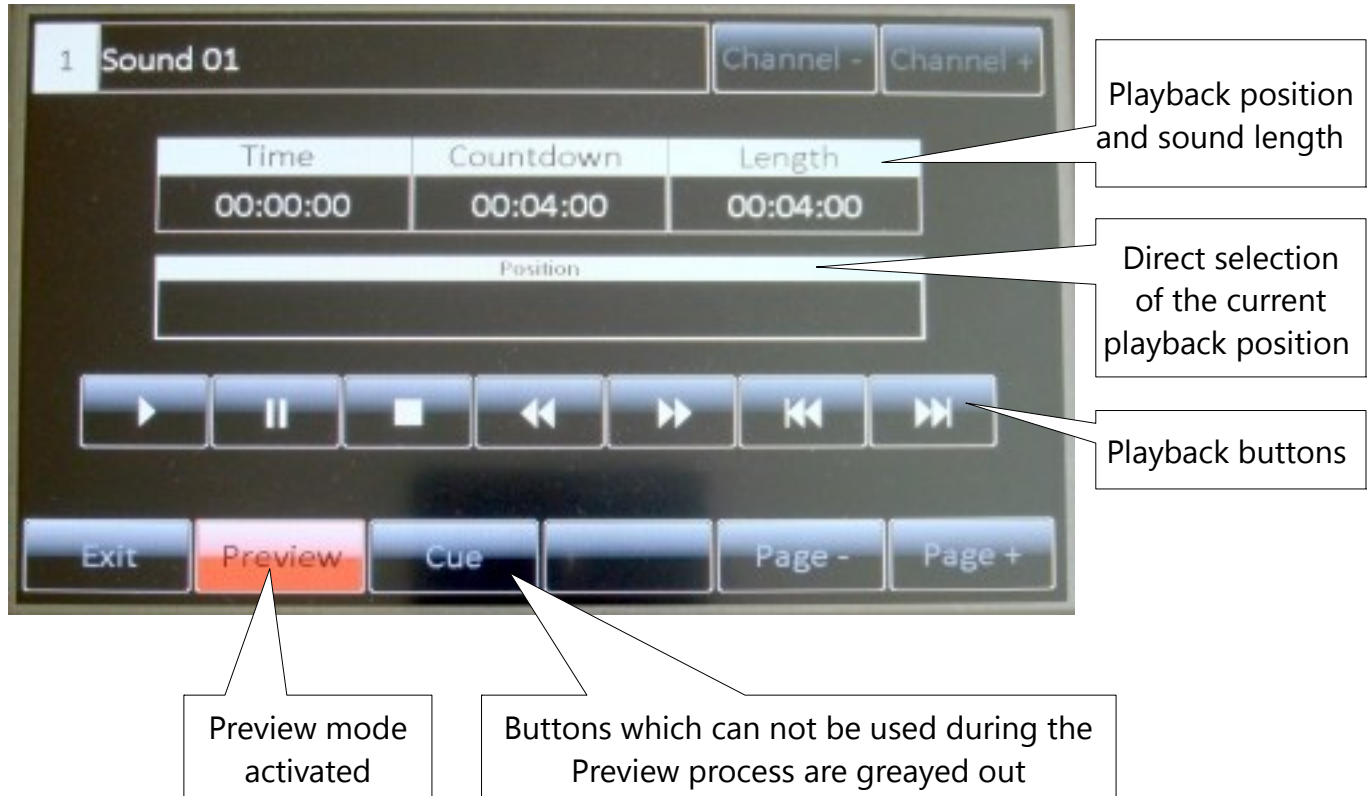
The **Page +/-** buttons are selecting the individual pages of the Channel mode.

Exit

This will let you go back to the 8 or 32 channel display. The current Channel mode page will be stored, so you can come back to this page from the main display directly.

Channel Mode - Preview function

This controls the Preview function of each channel and it works very similar to the Preview function you can control from the Teatro main page. During the Preview playback the sound will not use the regular output of the channel but it will use the output channel which was selected in the **Preferences/Output Devices/Preview** setup dialog.



Playback Functions

The buttons Play, Pause, Stop, Forward and Rewind are controlling the playback of the sound.

Position

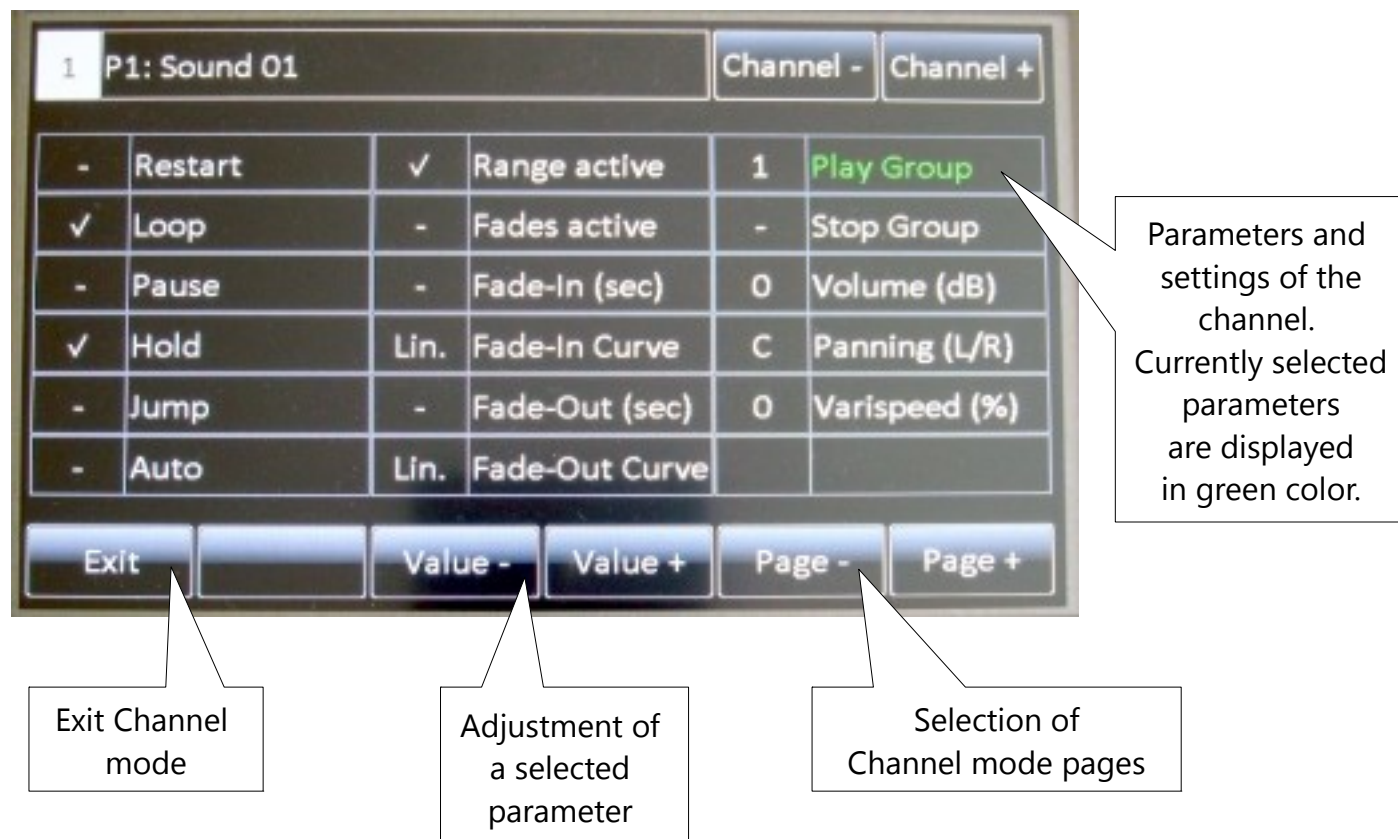
This field shows the current playback position of the sound as a progress bar. The position can be directly changed by touching the TFT screen in this area.

Limitations during the Preview process

Some functions/buttons are deactivated during the Preview process to prevent collision with the playback functions of the main channel. The buttons Exit, Cue, Page +/-, Channel +/- and the buttons for selection of the previous and next sounds in the playlist of the channel can not be used as long as the Preview mode is active. While a sound is playing in the main channel, the Preview function can not be accessed.

Channel Mode - displaying and changing parameters

The next page of the Channel mode can be accessed using the **Page +** button. On this page a selection of playback parameters are displayed and can also be changed.



Changing two-value parameters

Parameters which only have two values (on/off), can be switched directly by touching this parameter on the TFT screen.

These parameters are:

Restart
 Loop
 Pause
 Hold
 Jump
 Auto
 Range active
 Fades active

Changing multiple-value parameters

Parameters which have multiple values, must first be selected by touching the desired parameter field on the TFT screen, which will then display the selected parameter in green color. After selecting a parameter its value can be changed using the **Value +/-** buttons

The following parameters are having multiple values:

Fade-In

Fade-In Curve

Fade-Out

Fade-Out Curve

Play Group

Stop Group

Volume

Panning

Varispeed

Page selection

The **Page +/-** buttons are selecting the individual pages of the Channel mode.

Exit

This will let you go back to the 8 or 32 channel display. The current Channel mode page will be stored, so you can come back to this page from the main display directly.

Technical Notes

Power Supply

To operate the TR-3 remote controller it must be connected to a 12Volt / 2Amp. power supply which comes with your TR-3.

The connector is using a standard XLR type.

Pin 1 = + terminal of the power supply

Pin 5 = - terminal of the power supply

Fuse

On the backside of the device you will also find a fuse holder. The fuse mounted in this holder has 2 Ampere / medium blow.

TFT Screen

Do **not** clean the TFT screen using aggressive cleaning liquids.

A soft cloth with cleaning liquid or cleaning wipes for PC monitor screens are recommended.

USB Cable

The TR-3 should be connected using standard computer USB cables which should not exceed 2mtrs. in length. A suitable cable comes with your TR-3.